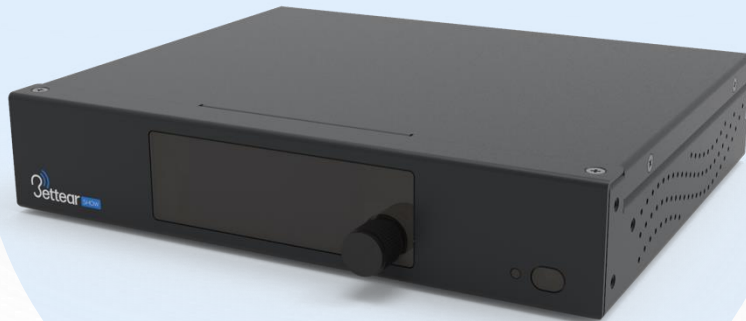




Bettear SHOW | **Data Sheet**

Real-time audio sampling and broadcasting system

www.bettear.com



Highlights:

- Low Latency Performance
- Personalized Sound
- Automatic Wi-Fi Connection
- Dynamic Visual and Textual Contents
- Up to 1,000 Users
- Live Transcribing
- Automatic Gain Control (AGC)

OVERVIEW

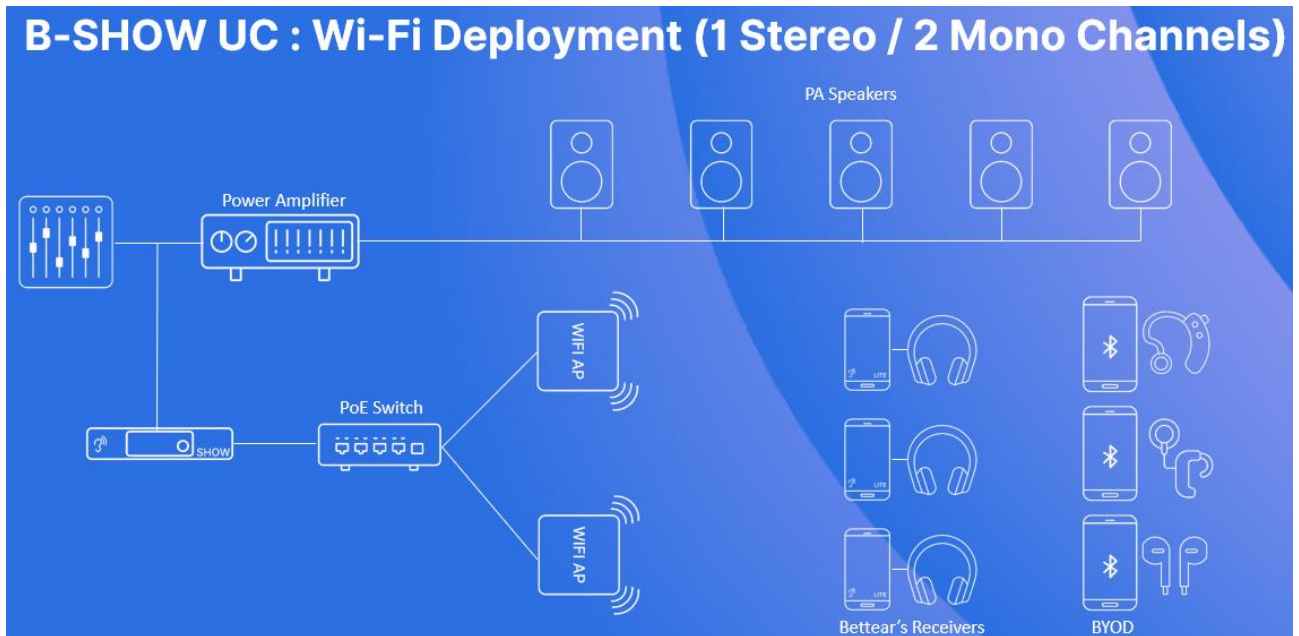
The B-SHOW streamer is a best-in-breed solution for streaming real-time audio over Wi-Fi and Auracast (*), providing a customized listening experience for the hard-of-hearing. The free Bettgear iOS and Android application allows users to connect easily and enjoy high-fidelity live audio content tailored to their unique preferences. This audio content is delivered through their earphones, cochlear implants, hearing aids, or induction loop receivers.

The B-SHOW streamer combines advanced technologies with a user-friendly design, making it easy for anyone to operate. This is the ideal choice for an optimal audio experience for those who seek to use cutting-edge technology to improve auditory accessibility.

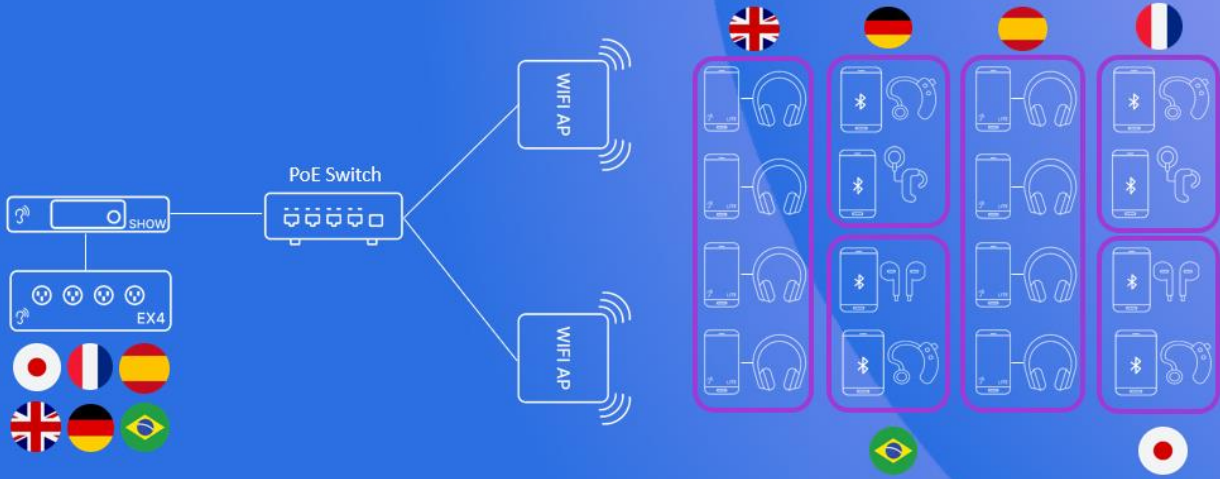
Bettgear's application allows to adjust audio settings effortlessly and provides an optional sound calibration feature for superior audio quality. Users can easily configure it through the web management dashboard, where multi-language transcriptions can be uploaded in real time, event descriptions with images and text can be added, and the application can be personalized to suit their preferences.



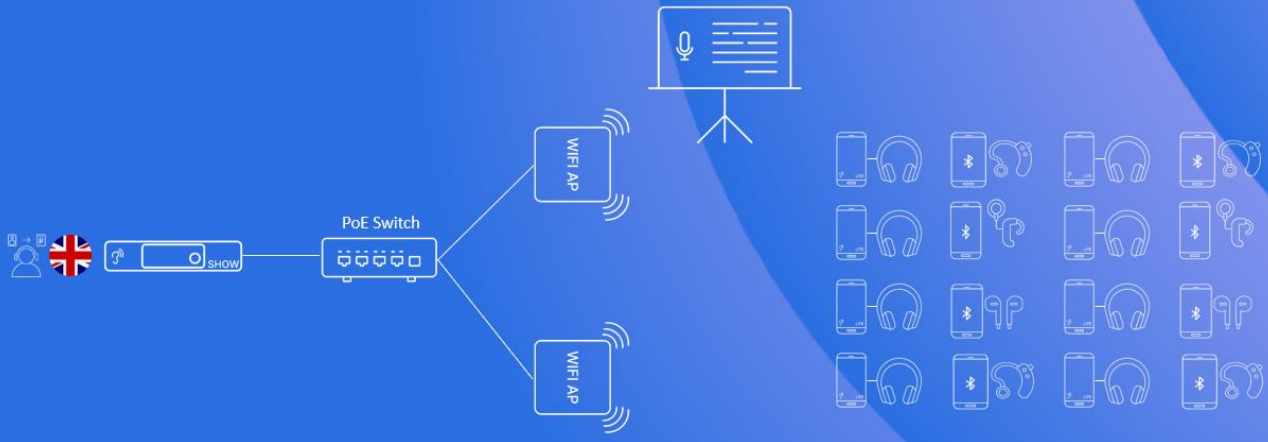
TYPICAL USE CASES



B-SHOW UC : Multi Languages Translation



B-SHOW UC : On-Screen Transcription



Internet access is required for firmware updating and cloud services.

BETTEAR SHOW DETAILS

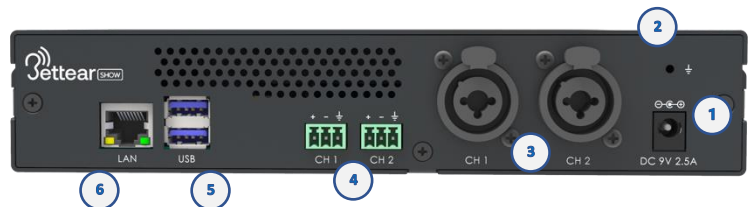
FRONT PANEL

1. Power ON/OFF Button
2. Blue POWER-ON LED Indicator
3. Clickable Rotary Menu Button
4. Display



BACK PANEL

1. DC Power Input
2. Ground Screw
3. Two Analog Inputs: Combo Jack (XLR+PL 1/4")
 - Note: XLR Jack – Balanced | PL Jack – Unbalanced
 - Configuration: 1 Stereo/2 Mono
4. Terminal Block Inputs (Balanced)
5. 2x USB 3.0 Ports
6. Gigabit Ethernet



Note: inputs 3 and 4 are wired in parallel

WARRANTY

Please visit www.betear.com for warranty and service information.

WARNING: Electrical Shock Hazard. No user-serviceable parts inside. Do not remove or open the cover to reduce the risk of electrical shock. Please contact Bettear for assistance.

PRIVACY POLICY

Please visit www.betear.com for warranty and service information.

SUPPORT

Please visit www.betear.com and use info@betear.com or call +972-3-7778630

BETTEAR SHOW – SERVER SPECIFICATIONS	
IP Address	DHCP, Reserved
Users Per Unit	Up to 1,000
Prioritization	QoS
Bandwidth Per User	250 kbps
Latency	40ms - 110ms * May vary with network and mobile device
Processor	Quad Core Cortex-A55 (ARM v8.2-A) 64-bit @1.5GHz
Memory	4GB
Application Support	iOS/Android
Offline Management Panel	Yes
Cloud Management	Yes (if connected to the internet)
Content Management System (Cloud)	Yes (if connected to the internet)
Audio Input Channels	1 Stereo/2 Mono Note: mix-down (sum) configuration is available on “stereo” mode (controlled via B-SHOW device menu).
Maximum Input Voltage	2.1Vrms (4.2Vrms for balanced input)
ADC Signal-to-Noise Ratio	110dB
DAC Signal-to-Noise ratio	112dB
ADC THD+N	-90dB
DAC THD+N	-93dB
Frequency Response	10Hz-22kHz
Input Gain	-12dB to 32dB
Automatic Gain Control (AGC)	Yes
Audio Filter	HPF and LPF
Sample Rate	48kHz
Bit Depth	32 bits
Rackmount 19” Compatible	Yes
Power Supply	9 VDC (Positive polarity), 2.5A Use AC/DC adapter which is safety approved according to IEC/EN 60950-1 or IEC/EN 62368-1 with rated voltage of 9Vdc and which certified as Limited Power Source (LPS). Usage d'adaptateur AC/DC (courant alternatif/courant continu) avec sécurité approuvé par IEC/EN 60 ou IEC/EN 62368-1, avec une tension nominale de 9Vdc et certifiée comme source d'alimentation limitée (LPS).
Operating Temperature	0 °C – 55 °C
Regulatory	FCC, CE, cUL, RoHS